

DesignaKnit8

As you will see, this is our biggest upgrade yet, by far. Upgrading DesignaKnit to the modern Windows environment meant a complete restructuring of the program - and we didn't know where to stop when it came to adding new features. Here are just some of them.

New features throughout!

Use up to date Windows functionality including long filenames, network, & mousewheel support. Compatible with 32- and 64-bit Windows.

Keep up to date easily with auto web updates.

Edit shapes and stitch patterns freely with 20 undo levels.

Set up your DesignaKnit cable link more easily- it can now find the port number for these cable types automatically:-

Serial Brotherlink 2 & 5 for KH965i, KH970, serial Brotherlink 4, serial E6000 link 2, serial ScreenLink (all of these with or without a USB converter).

USB Brotherlink 1, 3, & 5, the USB E6000 link 1 or 2, the USB Silverlink 3, and the USB ScreenLink.

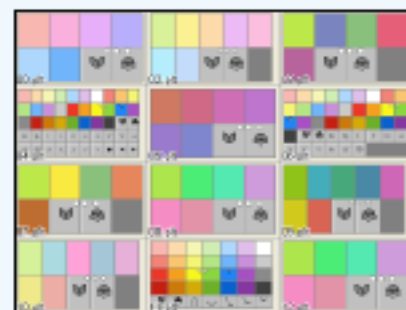
```
R1: [RS] P11,
R2:      K21,
R3:      P3, K15, P3,
R4:      K5, P15, K5,
R5:      P1, C3&D, P11, C3&D, P2,
R6:      K2, P2, K13, P2, K2,
```

Specify printouts more easily. Try the magazine style pattern text format. Many other printout improvements such as larger and clearer garment notation and better yarn calculation.



Manage tensions more easily with the new dialogue that enables you to use the default tensions, retrieve tensions from any stored shape file, or set the current tensions as the default.

Keep on top of your files with the greatly extended thumbnail viewer. Browse through your shape files and palettes as well as your stitch pattern and graphic files. New search and sort options help you find your files.



Standard Garment Styling

When editing the styling features, you can now apply changes before closing the styling windows.

Many other improvements including moveable horizontal and vertical rulers.

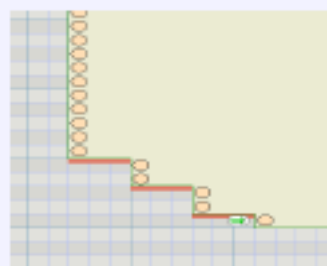


Original Pattern Drafting

(Included with HandKnit, Machine Pro, and Complete product levels)



The new Exact Stitch Layout mode enables you to have full control over the piece edges. Drag stitch handles located at the ends of rows to get the stitch layout exactly as you want. (Even without this mode, the stitch layout follows the points more closely than in previous versions).



A host of other features include the possibility of more complex shapes, a way of adding multiple points in a defined sequence, improved mirrors, rulers and grids, and the knit direction indicator for showing and changing the direction of knitting and warning of shaping errors.



Select and drag one or a group of coordinate points or stitch handles.

Or in one click modify groups of shaping method tags or slope type tags.



Display a stitch pattern on the active garment piece. Drag the pattern to the desired position - it's now the quickest way to integrate a garment piece with a stitch pattern.

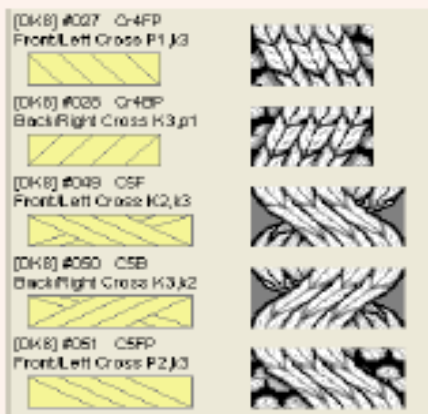
Stitch Designer

Open the Symbols Organizer and see the new TrueType "KnitWriteDK" knitting font. Select from the 221 hand and machine knitting symbols, each with its own abbreviation and knitting instruction. These can be printed using the new pattern text or garment text printout formats.

Symbol	RS-K Abbreviation	RS-K Knitting Instruction
12	K1b1	Knit through back of loop
124	P1b1	Purl through back of loop
47	K1R	Knit, taking yarn over rather than
52	P1R	Purl, taking yarn under rather than
81	s1K	Slip stitch knitwise
82	s1P	Slip stitch Purlwise
123	W1R1W	With yarn of front of work: 1st row

Use the abbreviations and instructions as they are - or edit them in the new Symbols Text Editor and keep your own collections.

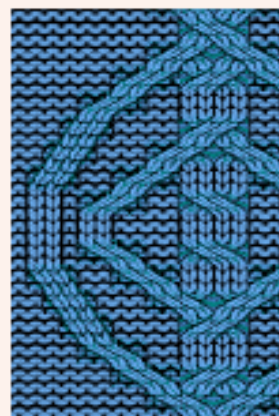




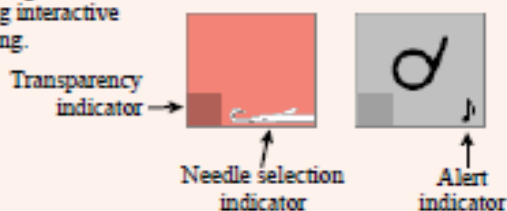
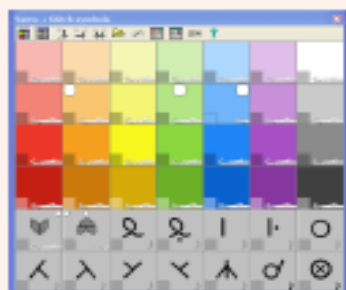
Open the Cables Organizer to see the available range of stitch cables. In the machine knit product levels of DesignaKnit 8, there are 60 simple cables to choose from, while in the products that include hand knitting there are a total of 168 cables. Each has its own abbreviation and knitting instruction that can be printed using the new pattern text or garment text formats. Select as many as you want into your working palette and place them into your stitch pattern using the cable tool.

If fabric texture is turned on you can see how the stitches cross over and cables join up with each other. Enjoy the improved fabric texture!

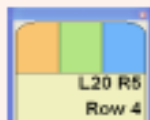
Use the cable abbreviations and instructions as they are - or add custom cables with your own knitting instructions.



When designing for machine knitting, the Palette now has separate indicators for needle selection and transparency for both yarn colours and stitch symbols. Some symbols are mainly for hand knitting or for sounding an alert during interactive knitting.



Starting a new stitch pattern is much easier with the important choices being presented together, including (for product levels that include hand knitting) new hand knitting options.

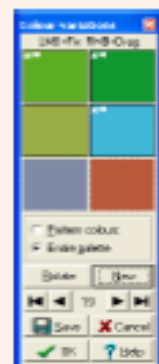


There is a new indicator of the yarn colours or symbols allocated to mouse buttons. Other indicators show the mouse position within the pattern, within the active piece, and the selection box size and position.

The Yarn Colours Organizer (was Woolbox in DesignaKnit 7) has new options for generating complementary colours and colour ranges.



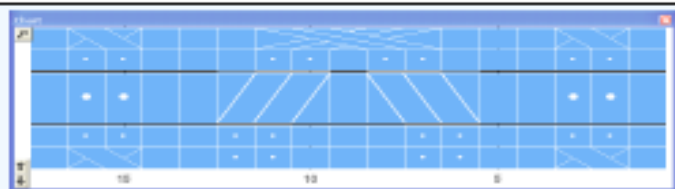
Design with an extended and improved set of tools. They include moveable rulers that work in stitches and rows, cm, or inches. There are brush shapes to choose from, and more brush sizes. There are great new options for varying colours randomly, and for inserting text into stitch patterns-including different text orientations and the option of fixed font sizes. When Tiling a motif into a larger pattern, you can now drag the tiled motifs until the repeats fall the way you want. And many many more.



In the machine knit product levels, you can read and write stitch pattern files for the Silver Reed PC10 Pattern Controller.

Interactive Knitting

In the HandKnit and Complete product levels, there is an additional window in the Interactive Knitting screen that displays the hand knitting instructions for the current row (similar to the pattern text or garment text printout).



There are new options for shape-only knitting, controlling the starting side and fabric side. New audible alerts can be sounded for stitch symbols, and the new bell alert is an alternative to full voice instructions for faster knitting. The beeps that earlier versions did not do under Vista & Windows 7 have been restored.



DesignaKnit Graphics Studio

Larger images and more image formats are now supported - WMF, TGA, PBM, PPM, and PGM files in addition to previously supported JPG, TIF, GIF, PCX, and BMP.

Pixel perfect conversions. When the image is small and every pixel is to be converted to one or more stitches, the new does it more accurately.

It is now easy to get back exactly to the point at which you were working in a previous session, provided you previously took the option to save the settings. Just open the same graphic file and the same palette appears, with the same assignments of image colours to yarn colours, and the same grid settings, etc.

The new rotate image option can correct pictures or diagrams that have been scanned or photographed at an angle.

Open and save palette files while converting an image. This makes it easy to convert images to the colours of the yarns that you use.

System requirements

Windows 98 SE or later.

Free USB port for optional cable links (does not apply to HandKnit).

Screen size at least 800 x 600 pixels.

Approx 500 Mb hard disk space (if install tutorials & manuals). 90 Mb without tutorials & manuals.



Newton's Yarn Country

2100 E. Howell Ave, Suite 211

Anaheim, CA 92806 USA

(714) 634-9116

www.newtons.com

Email: newtonknits@aol.com