

# NEWTON'S YARN COUNTRY MATTE SCARF

**YARN:** Newton's Yarn Country MATTE, 450 yards.

**GAUGE:** Using size 7-9 needle 4-5 sts per inch

## ABBREVIATIONS:

**K**=Knit

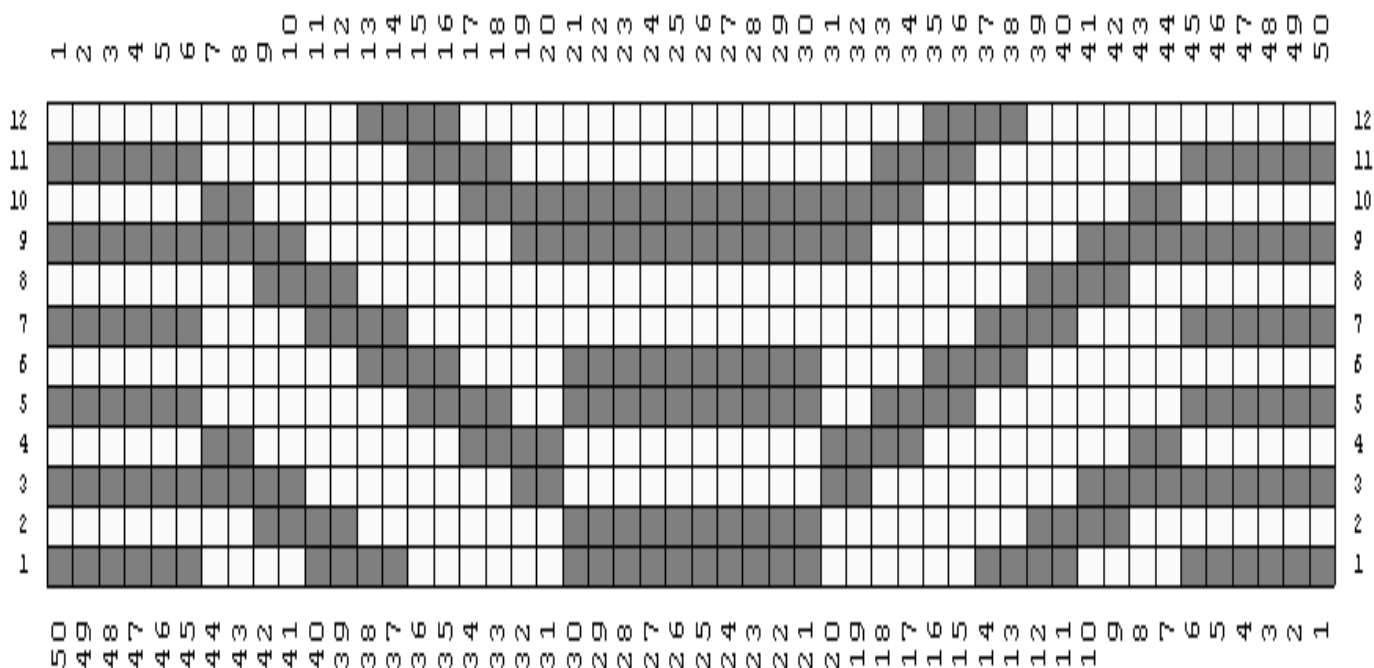
**P**=Purl



**NEWTON'S YARN COUNTRY  
MATTE SCARF**  
[www.newtons.com](http://www.newtons.com)

SYMBOLS	
	KNIT ON RS; PURL ON WS
	PURL ON RS; KNIT ON WS

See following pages for detail stitch pattern and chart.



Every effort has been made to have the knitting instructions accurate and complete. We cannot be responsible for variance of individual knitters, human errors, or typographical mistakes.

(© 2012 Newton's Yarn Country. All rights reserved.).



Newton's Yarn Country (714) 634-9116  
2100 E. Howell Ave, Suite 211, Anaheim, Ca 92806 USA  
[www.newtons.com](http://www.newtons.com) Email: [newtonknits@aol.com](mailto:newtonknits@aol.com)

# NEWTON'S YARN COUNTRY MATTE SCARF

Cast on 50 sts.

## Bottom Border:

Slip 1 sts (selvage), Knit 49 sts.  
Repeat for a total of 14 rows.

## Begin Chevron Pattern

- Row 1: (RS) Slip 1 st, Knit 5 sts. K2, (K4, P4) twice; P2, K10, P2, (P4, K4) twice; K2. End with knit 6 sts.
- Row 2: Slip 1 st, Knit 5 sts. (k8, P4) twice; P2, (P4, K8) twice. End with knit 6sts.
- Row 3: Slip 1 st, Knit 5 sts. K10, P3, (P5, K2, P5) twice; P3, K10. End with knit 6 sts
- Row 4: Slip 1 st, Knit 5 sts. K6, P2, K3, (K5, P4, K5) twice; K3, P2, K6. End with knit 6 sts.
- Row 5: Slip 1 st, Knit 5 sts. K6, P6, (P2, K4) twice; K2, (K4, P2) twice; P6, K6 End with knit 6 sts.
- Row 6: Slip 1 st, Knit 5 sts. K8, (K4, P4) twice; P2, (P4, K4) twice; K8. End with knit 6 sts.
- Row 7: Slip 1 st, Knit 5 sts. K2, (k4, P4) twice; P14, (P4, K4) twice; K2. End with knit 6 sts.
- Row 8: Slip 1 st, Knit 5 sts. K8, P4, K26, P4, K8. End with knit 6 sts.
- Row 9: Slip 1 st, Knit 5 sts. K3, (K7, P8, K7) twice; K3. End with knit 6 sts.
- Row 10: Slip 1 st, Knit 5 sts. K6, P2, K8, P18, K8, P2, K6. End with knit 6 sts.
- Row 11: Slip 1 st, Knit 5 sts. K6, P1, (P7, K4, P7) twice; P1, K6. End with knit 6 sts.
- Row 12: Slip 1 st, Knit 5 sts. K3, (K9, P4, K9) twice; K3. End with knit 6 sts.

Repeat Chevron pattern for 63 inches.

## Top Border:

Slip 1 sts (selvage), Knit 49 sts.  
Repeat for a total of 14 rows.

Bind off.



Newton's Yarn Country (714) 634-9116 [www.newtons.com](http://www.newtons.com)  
2100 E. Howell Ave, Suite 211, Anaheim, Ca 92806 USA  
Email: [newtonknits@aol.com](mailto:newtonknits@aol.com)



**Newton's Yarn Country (714) 634-9116**  
 2100 E. Howell Ave, Suite 211, Anaheim, Ca 92806 USA  
 www.newtons.com Email: newtonknits@aol.com



**Newton's Yarn Country (714) 634-9116**  
 2100 E. Howell Ave, Suite 211, Anaheim, Ca 92806 USA  
 www.newtons.com Email: newtonknits@aol.com

Newton's Yarn Country	Yarn Weight	Gauge Per Inch	Needle Sizes	CYC Yarn Standard	MK Tensions	DPI
<b>ANGORA BLEND</b> 45% ANGORA 45% MERINO 10% RAYON	2300 Yards/LB	6-8 STS	US 1 to 3 2.5-3.25mm	FINGERING	4.5 T10 6.5 T6 9.0 T2	RECOMMEND FOR WEFT ONLY
<b>BAMBA</b> 75% COTTON 25% RAYON	1100 Yards/LB	4-5 STS	US 7 to 9 4.5-5.5mm	WORSTED	4.5 T10.2 6.5 T5 9.0 T1	7.5 DPI
<b>BAMBOO COTTON</b> 50% BAMBOO 50% COTTON	1600 Yards/LB	6-7 STS	US 1 to 3 2.5-3.25mm	FINGERING	4.5 T10 6.5 T6 9.0 T2	12-13 DPI
<b>BIG CHENILLE</b> 100% RAYON HANDPAINTED	400 Yards/LB	2-3 STS	US 17 to 19 12-15mm	CHUNKY	T10 EON	5 DPI
<b>CANNON</b> 40% COTTON/40% RAYON 20% LINEN	1000 Yards/LB	4-5 STS	US 7 to 9 4.5-5.5mm	WORSTED	4.5 T10.2 6.5 T5 9.0 T1	7.5 DPI
<b>CASHMERE MERINO</b> 50% CASHMERE 50% MERINO	2000 Yards/LB	6-7 STS	US 1 to 3 2.5-3.25mm	FINGERING	4.5 T10 6.5 T6 9.0 T2	10 DPI
<b>CASHMERE SILK</b> 50% CASHMERE 50% MERINO	1100 Yards/LB	4-5 STS	US 7 to 9 4.5-5.5mm	WORSTED	4.5 T10.2 6.5 T5 9.0 T1	7.5 DPI
<b>CHAMOIS</b> 80% RAYON 20% LINEN	1400 Yards/LB	5-6 STS	US 4 to 6 3.5-5mm	SPORT	4.5 T9 6.5 T5 9.0 T1	7.5 DPI
<b>CHINO COTTON BOUCLE</b> 100% COTTON	900 Yards/LB	4-5 STS	US 7 to 9 4.5-5.5mm	HEAVY WORSTED	9.0 T10	5 DPI
<b>COTTON ICE</b> 50% COTTON 50% RAYON	2300 Yards/LB	6-8 STS	US 1 to 3 2.5-3.25mm	FINGERING	4.5 T10 6.5 T6 9.0 T2	7.5 DPI
<b>COTTON RAYON BOUCLE</b> 50% COTTON 50% RAYON	1800 Yards/LB	4-5 STS	US 7 to 9 4.5-5.5mm	WORSTED	6.5 T7 9.0 T4	7-8 DPI
<b>DAZZLE 2</b> 50% RAYON 30% WOOL 10% METALLIC	1100 Yards/LB	4-5 STS	US 7 to 9 4.5-5.5mm	WORSTED	6.5 T7 9.0 T4	7-8 DPI
<b>ITALIAN FANCY</b> COTTON RAYON NUB	1000 Yards/LB	4-5 STS	US 7 to 9 4.5-5.5mm	WORSTED	9.0 T10	5 DPI
<b>ITALIAN FORTUNNI</b> 100% RAYON	2000 Yards/LB	6-8 STS	US 1 to 3 2.5-3.25mm	FINGERING	4.5 T10 6.5 T6	10 DPI
<b>ITALIAN FORTUNNI</b> 100% RAYON	1200 Yards/LB	4-5 STS	US 7 to 9 4.5-5.5mm	WORSTED	6.5 T10 9.0 T6	7.5 DPI
<b>LINEN TWEED</b> 60% LINEN 40% RAYON	1250 Yards/LB	5-6 STS	US 7 to 9 4.5-5.5mm	WORSTED	4.5 T9 6.5 T5 9.0 T1	10 DPI
<b>MATTE</b> 100% RAYON	1000 Yards/LB	4-5 STS	US 7 to 9 4.5-5.5mm	FINGERING	4.5 T10.2 6.5 T5 9.0 T1	5 DPI
<b>NEVADA</b> 100% RAYON	1100 Yards/LB	4-5 STS	US 7 to 9 4.5-5.5mm	WORSTED	6.5 T10 9.0 T6	7-8 DPI
<b>MOHAIR</b> 100% WOOL	500 Yards/LB	2-3 STS	US 11 to 13	CHUNKY	6.5 T10.2 9.0 T5	RECOMMEND FOR WEFT ONLY
<b>PUFF N STUFF</b> WOOL/RAYON ACRYLIC	800 Yards/LB	3-4 STS	US 9 to 10 5.5-6.5mm	HEAVY WORSTED	6.5 T6 9.0 T3	5 DPI
<b>SILK WOOL</b> 90% SILK 10% WOOL	3000 Yards/LB	8-10 STS	US 1 to 3 2.5-3.25mm	FINGERING	4.5 T8 6.5 T3	12.5 DPI
<b>SUPERWASH MERINO</b> 70% MERINO WOOL 30% NYLON	1680 Yards/LB	6-7 STS	US 1 to 3 2.5-3.25mm	FINGERING	4.5 T10.2 6.5 T5 9.0 T1	7-8 DPI
	800 Yards/LB	3-4 STS	US 9 to 10 5.5-8mm	CHUNKY	9.0 T10	5 DPI
<b>SOFTBALL COTTON DK</b> 100% COTTON	1680 Yards/LB	5-6 STS	US 4 to 6 3.5-4mm	SPORT	4.5 T10.2 6.5 T5 9.0 T1	7-8 DPI
<b>SOFTBALL COTTON BULKY</b> 100% COTTON	800 Yards/LB	4-5 STS	US 7 to 9 4.5-5.5mm	HEAVY WORSTED	9.0 T10	5 DPI
<b>WOOL BOUCLE</b> 95% WOOL 5% NYLON	800 Yards/LB	4-5 STS	US 7 to 9 4.5-5.5mm	WORSTED	6.5 T10.2 9.0 T5	7-8 DPI

NEWTON'S YARN COUNTRY YARN CALCULATIONS									
OZS	LBS	400 YARDS	500 YARDS	800 YARDS	900 YARDS	1000 YARDS	1100 YARDS	1200 YARDS	1250 YARDS
4	0.25	100	125	200	225	250	275	300	312.5
5.28	0.33	132	165	264	297	330	363	395	412.5
8	0.5	200	250	400	450	500	550	600	625
10.56	0.66	264	330	528	594	660	726	792	825
12	0.75	300	375	600	675	750	825	900	937.5
16	1.0	400	500	800	900	1,000	1,100	1,200	1,250
20	1.25	500	625	1,000	1,125	1,250	1,375	1,500	1,562.5
21.28	1.33	532	665	1,064	1,197	1,330	1,463	1,596	1,662.5
24	1.5	600	750	1,200	1,350	1,500	1,650	1,800	1,875
26.56	1.66	664	830	1,328	1,494	1,660	1,826	1,992	2,075
28	1.75	700	875	1,400	1,575	1,750	1,925	2,100	2,187.5
32	2	800	1,000	1,600	1,800	2,000	2,200	2,400	2,500

NEWTON'S YARN COUNTRY YARN CALCULATIONS									
OZS	LBS	1400 YARDS	1600 YARDS	1680 YARDS	1800 YARDS	2000 YARDS	2300 YARDS	2400 YARDS	3000 YARDS
4	0.25	350	400	420	450	500	575	600	750
5.28	0.33	462	528	544.4	594	660	759	792	990
8	0.5	700	800	840	900	1,000	1,150	1,200	1,500
10.56	0.66	924	1,056	1,108.8	1,188	1,320	1,518	1,584	1,980
12	0.75	1,050	1,200	1,260	1,325	1,500	1,725	1,800	2,250
16	1.0	1,400	1,600	1,680	1,800	2,000	2,300	2,400	3,000
20	1.25	1,750	2,000	2,100	2,250	2,500	2,875	3,000	3,750
21.28	1.33	1,862	2,128	2,234.4	2,394	2,660	3,059	3,192	3,990
24	1.5	2,100	2,400	2,525	2,700	3,000	3,450	3,600	4,500
26.56	1.66	2,324	2,656	2,788.8	2,988	3,320	3,818	3,984	4,980
28	1.75	2,450	2,800	2,945	3,150	3,500	4,025	4,200	5,250
32	2	2,800	3,200	3,360	3,600	4,000	4,600	4,800	6,000

ESTIMATED PROJECT YARN YARDAGE								
YARN	FINGERING WT		SPORT WT		WORSTED		CHUNKY	
SIZE	CHILD	ADULT	CHILD	ADULT	CHILD	ADULT	CHILD	ADULT
SCARF	400	660	350	700	190	380	125	250
VEST	400 to 750	950 to 1650	300 to 600	700 to 1250	250 to 500	600 to 1050	175 to 400	450 to 800
SWEATER	750 to 1450	1800 to 3000	550 to 1100	1400 to 2300	500 to 1000	1200 to 2000	350 to 700	900 to 1500

Gram	Ounces
50	1.75
100	3.5

**NEWTON'S SPRING FLING SEMINAR**  
**APRIL 27-29, 2012**  
 FOR MORE INFORMATION, CLASS SCHEDULE, INSTRUCTOR BIOGRAPHYS, ETC  
 GO TO OUR WEBSITE [www.newtons.com](http://www.newtons.com), OR phone (714) 634-9116

# **Newton's Yarn Country**

## ***Yarns Twisted and Dyed in America***

---

**Stop in and become inspired with the fabulous variety of yarns in our store. You'll find cottons, bamboo, silk, merino, cashmere, and rayon designer novelties – both solid and hand-painted colors.**

**Twice yearly, in the Spring and in the Fall, Newton's hosts a fiber seminar in Anaheim, California for both the hand and machine knitter, crocheter and weaver. At our seminars, if it involves yarn, we cover it. You can come and shop and/or become involved in a variety of classes, from simple knitting and crochet instruction to demonstrations on various knitting machines, weaving, and felting. See our website for our calendar of events.**

**We love colors, fibers, and textures. Together, Norman and Helen are consistently developing new yarns for both the hand and machine knitter crocheter, and custom weavers from our own factory. These are not your typical yarns, but "custom yarns" that we twist, dye, and sell factory direct to you. Many of you have seen our yarns at Stitches, Vogue LIVE Knitting, CGOA & TKGGA, and weaving conferences.**

**2100 E. Howell Ave, Suite 211, Anaheim, CA 92806  
www.newtons.com Email: newtonknits@aol.com (714) 634-9116**