

NEWTON'S YARN COUNTRY NEVADA SCARF

YARN: Newton's Yarn Country NEVADA, 600 yards.

GAUGE: Using size 7-9 needle 4-5 sts per inch

ABBREVIATIONS:

K=Knit

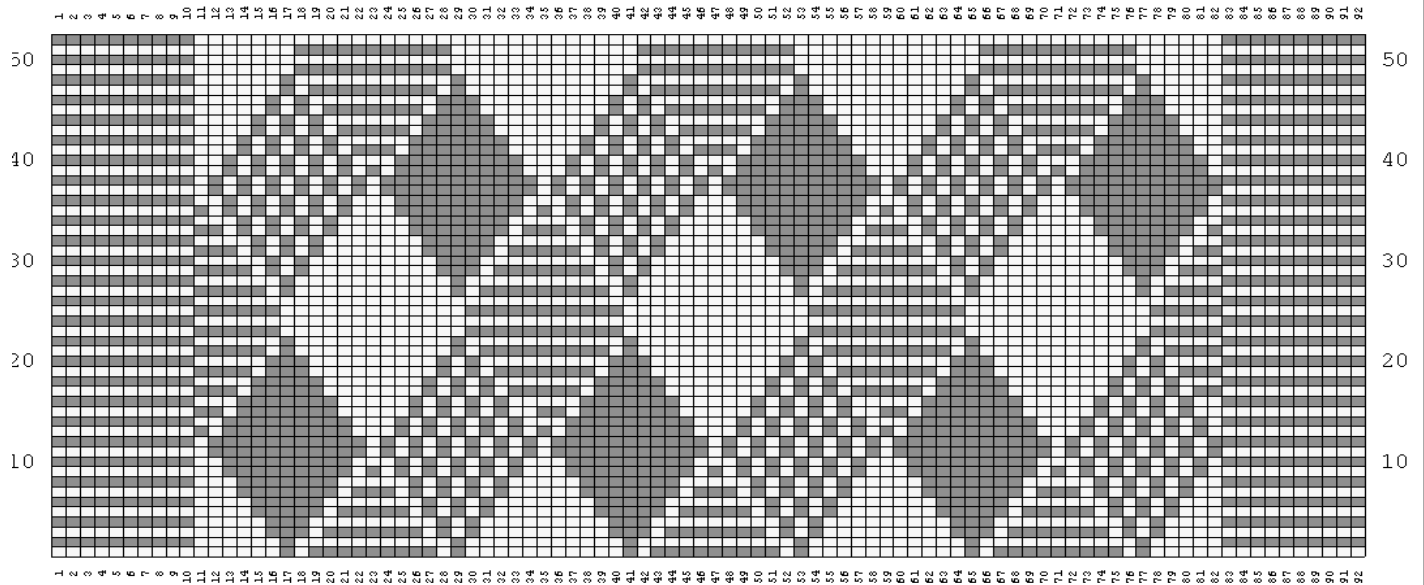
P=Purl



**NEWTON'S YARN COUNTRY
NEVADA SCARF**
www.newtons.com

SYMBOLS	
	KNIT ON RS; PURL ON WS
	PURL ON RS; KNIT ON WS

See following pages for detail stitch pattern and chart.



Every effort has been made to have the knitting instructions accurate and complete. We cannot be responsible for variance of individual knitters, human errors, or typographical mistakes.

(© 2012 Newton's Yarn Country. All rights reserved.).



Newton's Yarn Country (714) 634-9116
2100 E. Howell Ave, Suite 211, Anaheim, Ca 92806 USA
www.newtons.com Email: newtonknits@aol.com

NEWTON'S YARN COUNTRY NEVADA SCARF

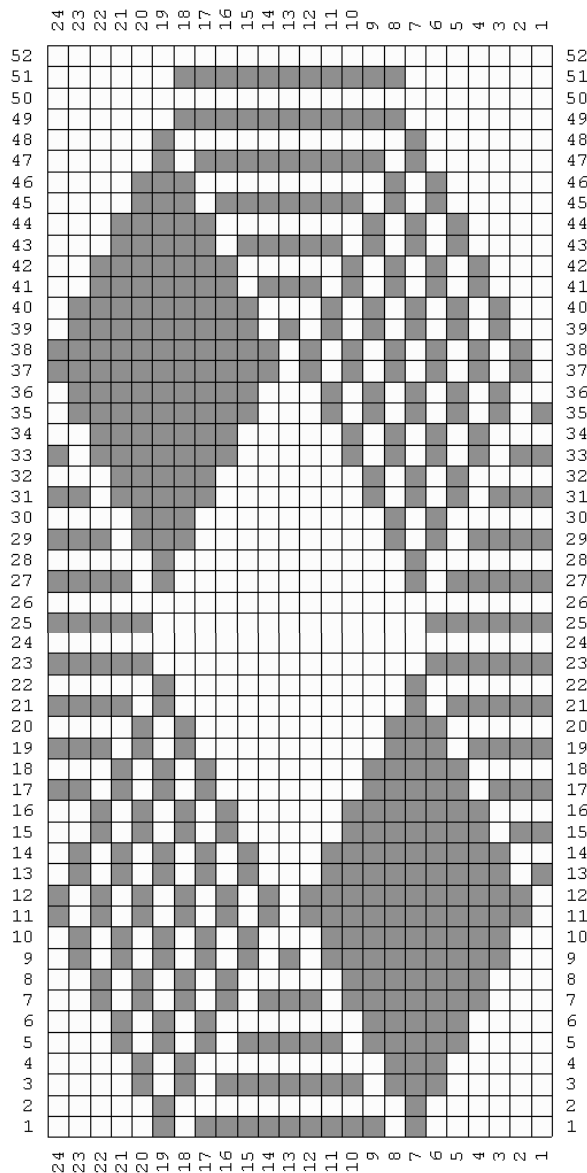
Cast on 92 sts.

Bottom Border:

Slip 1 sts (selvage), Knit 91 sts.
Repeat for a total of 20 rows.

Begin Diamond Garter Pattern

- Row 1: (RS) Slip 1 st, Knit 9 sts. *K5, (K1, P1) twice; P5, (P1, K1) twice; K4*. Hang marker. Repeat * to *. Hang marker. Repeat * to * (total 72 sts). End with knit 10 sts.
- Row 2: Slip 1 st, Knit 9 sts. *(P5, K1, P6) twice*. Repeat * to * between each marker for a total of 72 sts. End with knit 10 sts.
- Row 3: Slip 1 st, Knit 9 sts. * K4, (K1, P3) twice; P3, (P1, K1) three times; K3*. Repeat * to * between each marker for a total of 72 sts. End with knit 10 sts.
- Row 4: Slip 1 st, Knit 9 sts. * P4, (K1, P1) twice; P8, K3, P5*. Repeat * to * between each marker for a total of 72 sts. End with knit 10 sts.
- Row 5: Slip 1 st, Knit 9 sts. * K4, P1, (P4, K1, P1) twice; (K1, P1) twice; K3 *. Repeat * to * between each marker for a total of 72 sts. End with knit 10 sts.
- Row 6: Slip 1 st, Knit 9 sts. * P3, (K1, P1) three times; P6, K5, P4 *. Repeat * to * between each marker for a total of 72 sts. End with knit 10 sts.
- Row 7: Slip 1 st, Knit 9 sts. * K3, P5, (P2, K1, P1) twice; (K1, P1) three times; K2 *. Repeat * to * between each marker for a total of 72 sts. End with knit 10 sts.
- Row 8: Slip 1 st, Knit 9 sts. * P2, (K1, P1) four times; P4, K7, P3 *. Repeat * to * between each marker for a total of 72 sts. End with knit 10 sts.
- Row 9: Slip 1 st, Knit 9 sts. * K2, P8, (P1, K1) seven times *. Repeat * to * between each marker for a total of 72 sts. End with knit 10 sts.
- Row 10: Slip 1 st, Knit 9 sts. * P1, (K1, P1) five times; P2, K9, P2 *. Repeat * to * between each marker for a total of 72 sts. End with knit 10 sts.
- Row 11: Slip 1 st, Knit 9 sts. * K1, P10, (P1, K1) six times; P1*. Repeat * to * between each marker for a total of 72 sts. End with knit 10 sts.
- Row 12: Slip 1 st, Knit 9 sts. * K1, (P1, K1) six times; K10, P1*. Repeat * to * between each marker for a total of 72 sts. End with knit 10 sts.
- Row 13: Slip 1 st, Knit 9 sts. * P1, K1, P9, K2, (K1, P1) five times; K1*. Repeat * to * between each marker for a total of 72 sts. End with knit 10 sts.
- Row 14: Slip 1 st, Knit 9 sts. * P1, (K1, P1) five times; P2, K9, P2*. Repeat * to * between each marker for a total of 72 sts. End with knit 10 sts.



Newton's Yarn Country (714) 634-9116 www.newtons.com
2100 E. Howell Ave, Suite 211, Anaheim, Ca 92806 USA
Email: newtonknits@aol.com

NEWTON'S YARN COUNTRY NEVADA SCARF

- Row 15: Slip 1 st, Knit 9 sts. * P2, K1, P7, K4, (K1, P1) four times; K2*. Repeat * to * between each marker for a total of 72 sts. End with knit 10 sts.
- Row 16: Slip 1 st, Knit 9 sts. *P2, (k1, P1) four times; P4, K7, P3*. Repeat * to * between each marker for a total of 72 sts. End with knit 10 sts.
- Row 17: Slip 1 st, Knit 9 sts. *P3, K1, P5, K6, (K1, P1) four times; P1*. Repeat * to * between each marker for a total of 72 sts. End with knit 10 sts.
- Row 18: Slip 1 st, Knit 9 sts. *P3, (K1, P1) three times; P6, K5, P4*. Repeat * to * between each marker for a total of 72 sts. End with knit 10 sts.
- Row 19: Slip 1 st, Knit 9 sts. * P1, (P3, K1) twice; K7, (K1, P1) three times; P2*. Repeat * to * between each marker for a total of 72 sts. End with knit 10 sts.
- Row 20: Slip 1 st, Knit 9 sts. *P4, (K1, P1) twice; P8, K3, P5*. Repeat * to * between each marker for a total of 72 sts. End with knit 10 sts.
- Row 21: Slip 1 st, Knit 9 sts. * P4, (P1, K1) twice; K9, (K1, P1) twice; P3*. Repeat * to * between each marker for a total of 72 sts. End with knit 10 sts.
- Row 22: Slip 1 st, Knit 9 sts. *(P5, K1, P6) twice*. Repeat * to * between each marker for a total of 72 sts. End with knit 10 sts.
- Row 23: Slip 1 st, Knit 9 sts. *P6, K13, P5*. Repeat * to * between each marker for a total of 72 sts. End with knit 10 sts.
- Row 24: Slip 1 st, Knit 9 sts. P24 Repeat * to * between each marker for a total of 72 sts. End with knit 10 sts.
- Row 25 and 26: Repeat rows 23 and 24.
- Row 27: Slip 1 st, Knit 9 sts. *P4, (p1, K1) twice; K9, (K1, P1) twice; P3*. Repeat * to * between each marker for a total of 72 sts. End with knit 10 sts.
- Row 28: Slip 1 st, Knit 9 sts. * (P5, K1, P6) twice*. Repeat * to * between each marker for a total of 72 sts. End with knit 10 sts.
- Row 29: Slip 1 st, Knit 9 sts. * P3, (P1, K1) three times; K7, (K1, P3) twice*. Repeat * to * between each marker for a total of 72 sts. End with knit 10 sts.
- Row 30: Slip 1 st, Knit 9 sts. * P4, K3, P8, (P1, K1) twice; P5*. Repeat * to * between each marker for a total of 72 sts. End with knit 10 sts.
- Row 31: Slip 1 st, Knit 9 sts. * P2, (P1, K1) four times; K6, P5, K1, P2*. Repeat * to * between each marker for a total of 72 sts. End with knit 10 sts.
- Row 32: Slip 1 st, Knit 9 sts. * P3, K5, P6, (P1, K1) three times; P4*. Repeat * to * between each marker for a total of 72 sts. End with knit 10 sts.
- Row 33: Slip 1 st, Knit 9 sts. * P1, (P1, K1) five times; K4, P7, K1, P1*. Repeat * to * between each marker for a total of 72 sts. End with knit 10 sts.
- Row 34: Slip 1 st, Knit 9 sts. * P2, K7, P4, (P1, K1) four times; P3*. Repeat * to * between each marker for a total of 72 sts. End with knit 10 sts.
- Row 35: Slip 1 st, Knit 9 sts. * (P1, K1) six times; K2, P9, K1*. Repeat * to * between each marker for a total of 72 sts. End with knit 10 sts.
- Row 36: Slip 1 st, Knit 9 sts. *P1, K9, P2, (P1, K1) five times; P2*. Repeat * to * between each marker for a total of 72 sts. End with knit 10 sts.
- Row 37: Slip 1 st, Knit 9 sts. *(K1, P1) seven times; P10*. Repeat * to * between each marker for a total of 72 sts. End with knit 10 sts.
- Row 38: Slip 1 st, Knit 9 sts. *K10, (K1, P1) seven times*. Repeat * to * between each marker for a total of 72 sts. End with knit 10 sts.

NEWTON'S YARN COUNTRY NEVADA SCARF

- Row 39: Slip 1 st, Knit 9 sts. *K1, (K1, P1) seven times; P8, K1*. Repeat * to * between each marker for a total of 72 sts. End with knit 10 sts.
- Row 40: Slip 1 st, Knit 9 sts. *P1, K9, P2, (P1, K1) five times; P2*. Repeat * to * between each marker for a total of 72 sts. End with knit 10 sts.
- Row 41: Slip 1 st, Knit 9 sts. *K2, (K1, P1) three times; K1, (P1, K1, P2) twice; P5, K2*. Repeat * to * between each marker for a total of 72 sts. End with knit 10 sts.
- Row 42: Slip 1 st, Knit 9 sts. *P2, K7, P4, (P1, K1) four times; P3*. Repeat * to * between each marker for a total of 72 sts. End with knit 10 sts.
- Row 43: Slip 1 st, Knit 9 sts. *K3, (K1, P1) twice; K1, (P1, K1, P4) twice; P1, K3*. Repeat * to * between each marker for a total of 72 sts. End with knit 10 sts.
- Row 44: Slip 1 st, Knit 9 sts. *P3, K5, P6, (P1, K1) three times; P4*. Repeat * to * between each marker for a total of 72 sts. End with knit 10 sts.
- Row 45: Slip 1 st, Knit 9 sts. *K4, (K1, P1) three times; P3, (P3, K1) twice; K3*. Repeat * to * between each marker for a total of 72 sts. End with knit 10 sts.
- Row 46: Slip 1 st, Knit 9 sts. *P4, K3, P8, (P1, K1) twice; P5*. Repeat * to * between each marker for a total of 72 sts. End with knit 10 sts.
- Row 47: Slip 1 st, Knit 9 sts. *K5, (K1, P1) twice; P7, (P1, K1) twice; K4*. Repeat * to * between each marker for a total of 72 sts. End with knit 10 sts.
- Row 48: Slip 1 st, Knit 9 sts. *(P5, K1, P6) twice*. Repeat * to * between each marker for a total of 72 sts. End with knit 10 sts.
- Row 49: Slip 1 st, Knit 9 sts. *K7, P11, K6*. Repeat * to * between each marker for a total of 72 sts. End with knit 10 sts.
- Row 50: Slip 1 st, Knit 9 sts. *P24*. Repeat * to * between each marker for a total of 72 sts. End with knit 10 sts.
- Rows 51 and 52: Repeat rows 49 and 50.

Repeat pattern to the desired length. (Sample is 364 rows)

Top Border:

Slip 1 sts (selvage), Knit 79 sts.

Repeat for a total of 20 rows.

Bind Off.



Newton's Yarn Country (714) 634-9116
 2100 E. Howell Ave, Suite 211, Anaheim, Ca 92806 USA
 www.newtons.com Email: newtonknits@aol.com



Newton's Yarn Country (714) 634-9116
 2100 E. Howell Ave, Suite 211, Anaheim, Ca 92806 USA
 www.newtons.com Email: newtonknits@aol.com

Newton's Yarn Country	Yarn Weight	Gauge Per Inch	Needle Sizes	CYC Yarn Standard	MK Tensions	DPI
ANGORA BLEND 45% ANGORA 45% MERINO 10% RAYON	2300 Yards/LB	6-8 STS	US 1 to 3 2.5-3.25mm	FINGERING	4.5 T10 6.5 T6 9.0 T2	RECOMMEND FOR WEFT ONLY
BAMBA 75% COTTON 25% RAYON	1100 Yards/LB	4-5 STS	US 7 to 9 4.5-5.5mm	WORSTED	4.5 T10.2 6.5 T5 9.0 T1	7.5 DPI
BAMBOO COTTON 50% BAMBOO 50% COTTON	1600 Yards/LB	6-7 STS	US 1 to 3 2.5-3.25mm	FINGERING	4.5 T10 6.5 T6 9.0 T2	12-13 DPI
BIG CHENILLE 100% RAYON HANDPAINTED	400 Yards/LB	2-3 STS	US 17 to 19 12-15mm	CHUNKY	T10 EON	5 DPI
CANNON 40% COTTON/40% RAYON 20% LINEN	1000 Yards/LB	4-5 STS	US 7 to 9 4.5-5.5mm	WORSTED	4.5 T10.2 6.5 T5 9.0 T1	7.5 DPI
CASHMERE MERINO 50% CASHMERE 50% MERINO	2000 Yards/LB	6-7 STS	US 1 to 3 2.5-3.25mm	FINGERING	4.5 T10 6.5 T6 9.0 T2	10 DPI
CASHMERE SILK 50% CASHMERE 50% MERINO	1100 Yards/LB	4-5 STS	US 7 to 9 4.5-5.5mm	WORSTED	4.5 T10.2 6.5 T5 9.0 T1	7.5 DPI
CHAMOIS 80% RAYON 20% LINEN	1400 Yards/LB	5-6 STS	US 4 to 6 3.5-5mm	SPORT	4.5 T9 6.5 T5 9.0 T1	7.5 DPI
CHINO COTTON BOUCLE 100% COTTON	900 Yards/LB	4-5 STS	US 7 to 9 4.5-5.5mm	HEAVY WORSTED	9.0 T10	5 DPI
COTTON ICE 50% COTTON 50% RAYON	2300 Yards/LB	6-8 STS	US 1 to 3 2.5-3.25mm	FINGERING	4.5 T10 6.5 T6 9.0 T2	7.5 DPI
COTTON RAYON BOUCLE 50% COTTON 50% RAYON	1800 Yards/LB	4-5 STS	US 7 to 9 4.5-5.5mm	WORSTED	6.5 T7 9.0 T4	7-8 DPI
DAZZLE 2 50% RAYON 30% WOOL 10% METALLIC	1100 Yards/LB	4-5 STS	US 7 to 9 4.5-5.5mm	WORSTED	6.5 T7 9.0 T4	7-8 DPI
ITALIAN FANCY COTTON RAYON NUB	1000 Yards/LB	4-5 STS	US 7 to 9 4.5-5.5mm	WORSTED	9.0 T10	5 DPI
ITALIAN FORTUNNI 100% RAYON	2000 Yards/LB	6-8 STS	US 1 to 3 2.5-3.25mm	FINGERING	4.5 T10 6.5 T6	10 DPI
ITALIAN FORTUNNI 100% RAYON	1200 Yards/LB	4-5 STS	US 7 to 9 4.5-5.5mm	WORSTED	6.5 T10 9.0 T6	7.5 DPI
LINEN TWEED 60% LINEN 40% RAYON	1250 Yards/LB	5-6 STS	US 7 to 9 4.5-5.5mm	WORSTED	4.5 T9 6.5 T5 9.0 T1	10 DPI
MATTE 100% RAYON	1000 Yards/LB	4-5 STS	US 7 to 9 4.5-5.5mm	FINGERING	4.5 T10.2 6.5 T5 9.0 T1	5 DPI
NEVADA 100% RAYON	1100 Yards/LB	4-5 STS	US 7 to 9 4.5-5.5mm	WORSTED	6.5 T10 9.0 T6	7-8 DPI
MOHAIR 100% WOOL	500 Yards/LB	2-3 STS	US 11 to 13	CHUNKY	6.5 T10.2 9.0 T5	RECOMMEND FOR WEFT ONLY
PUFF N STUFF WOOL/RAYON ACRYLIC	800 Yards/LB	3-4 STS	US 9 to 10 5.5-6.5mm	HEAVY WORSTED	6.5 T6 9.0 T3	5 DPI
SILK WOOL 90% SILK 10% WOOL	3000 Yards/LB	8-10 STS	US 1 to 3 2.5-3.25mm	FINGERING	4.5 T8 6.5 T3	12.5 DPI
SUPERWASH MERINO 70% MERINO WOOL 30% NYLON	1680 Yards/LB	6-7 STS	US 1 to 3 2.5-3.25mm	FINGERING	4.5 T10.2 6.5 T5 9.0 T1	7-8 DPI
	800 Yards/LB	3-4 STS	US 9 to 10 5.5-8mm	CHUNKY	9.0 T10	5 DPI
SOFTBALL COTTON DK 100% COTTON	1680 Yards/LB	5-6 STS	US 4 to 6 3.5-4mm	SPORT	4.5 T10.2 6.5 T5 9.0 T1	7-8 DPI
SOFTBALL COTTON BULKY 100% COTTON	800 Yards/LB	4-5 STS	US 7 to 9 4.5-5.5mm	HEAVY WORSTED	9.0 T10	5 DPI
WOOL BOUCLE 95% WOOL 5% NYLON	800 Yards/LB	4-5 STS	US 7 to 9 4.5-5.5mm	WORSTED	6.5 T10.2 9.0 T5	7-8 DPI

NEWTON'S YARN COUNTRY YARN CALCULATIONS									
OZS	LBS	400 YARDS	500 YARDS	800 YARDS	900 YARDS	1000 YARDS	1100 YARDS	1200 YARDS	1250 YARDS
4	0.25	100	125	200	225	250	275	300	312.5
5.28	0.33	132	165	264	297	330	363	395	412.5
8	0.5	200	250	400	450	500	550	600	625
10.56	0.66	264	330	528	594	660	726	792	825
12	0.75	300	375	600	675	750	825	900	937.5
16	1.0	400	500	800	900	1,000	1,100	1,200	1,250
20	1.25	500	625	1,000	1,125	1,250	1,375	1,500	1,562.5
21.28	1.33	532	665	1,064	1,197	1,330	1,463	1,596	1,662.5
24	1.5	600	750	1,200	1,350	1,500	1,650	1,800	1,875
26.56	1.66	664	830	1,328	1,494	1,660	1,826	1,992	2,075
28	1.75	700	875	1,400	1,575	1,750	1,925	2,100	2,187.5
32	2	800	1,000	1,600	1,800	2,000	2,200	2,400	2,500

NEWTON'S YARN COUNTRY YARN CALCULATIONS									
OZS	LBS	1400 YARDS	1600 YARDS	1680 YARDS	1800 YARDS	2000 YARDS	2300 YARDS	2400 YARDS	3000 YARDS
4	0.25	350	400	420	450	500	575	600	750
5.28	0.33	462	528	544.4	594	660	759	792	990
8	0.5	700	800	840	900	1,000	1,150	1,200	1,500
10.56	0.66	924	1,056	1,108.8	1,188	1,320	1,518	1,584	1,980
12	0.75	1,050	1,200	1,260	1,325	1,500	1,725	1,800	2,250
16	1.0	1,400	1,600	1,680	1,800	2,000	2,300	2,400	3,000
20	1.25	1,750	2,000	2,100	2,250	2,500	2,875	3,000	3,750
21.28	1.33	1,862	2,128	2,234.4	2,394	2,660	3,059	3,192	3,990
24	1.5	2,100	2,400	2,525	2,700	3,000	3,450	3,600	4,500
26.56	1.66	2,324	2,656	2,788.8	2,988	3,320	3,818	3,984	4,980
28	1.75	2,450	2,800	2,945	3,150	3,500	4,025	4,200	5,250
32	2	2,800	3,200	3,360	3,600	4,000	4,600	4,800	6,000

ESTIMATED PROJECT YARN YARDAGE								
YARN	FINGERING WT		SPORT WT		WORSTED		CHUNKY	
SIZE	CHILD	ADULT	CHILD	ADULT	CHILD	ADULT	CHILD	ADULT
SCARF	400	660	350	700	190	380	125	250
VEST	400 to 750	950 to 1650	300 to 600	700 to 1250	250 to 500	600 to 1050	175 to 400	450 to 800
SWEATER	750 to 1450	1800 to 3000	550 to 1100	1400 to 2300	500 to 1000	1200 to 2000	350 to 700	900 to 1500

Gram	Ounces
50	1.75
100	3.5

NEWTON'S SPRING FLING SEMINAR
APRIL 27-29, 2012
 FOR MORE INFORMATION, CLASS SCHEDULE, INSTRUCTOR BIOGRAPHYS, ETC
 GO TO OUR WEBSITE www.newtons.com, OR phone (714) 634-9116

Newton's Yarn Country

Yarns Twisted and Dyed in America

Stop in and become inspired with the fabulous variety of yarns in our store. You'll find cottons, bamboo, silk, merino, cashmere, and rayon designer novelties – both solid and hand-painted colors.

Twice yearly, in the Spring and in the Fall, Newton's host a fiber seminar in Anaheim, California for both the hand and machine knitter, crocheter and weaver. At our seminars, if it involves yarn, we cover it. You can come and shop and/or become involved in a variety of classes, from simple knitting and crochet instruction to demonstrations on various knitting machines, weaving, and felting. See our website for our calendar of events.

We both love color, fibers, and textures. Together, Norman and Helen are consistently developing new yarns for both the hand and machine knitter crocheter, and custom weavers from our own factory. These are not your typical yarns, but "custom yarns" that we twist, dye, and sell factory direct to you. Many of you have seen our yarns at Stitches, Vogue LIVE Knitting, CGOA & TKGGA, and weaving conferences.

**2100 E. Howell Ave, Suite 211, Anaheim, CA 92806
www.newtons.com Email: newtonknits@aol.com (714) 634-9116**