

NEWTON'S YARN COUNTRY PANDA SCARF

YARN: Newton's Yarn Country PANDA, 550 yards.

GAUGE: Using size 3-5 needle 5-6 sts per inch

CARE INSTRUCTIONS:

70% Bamboo 30% Organic Cotton

Machine Wash GENTLE Cycle

COLD water

Lay Flat to Dry



**NEWTON'S YARN COUNTRY
PANDA SCARF**
www.newtons.com

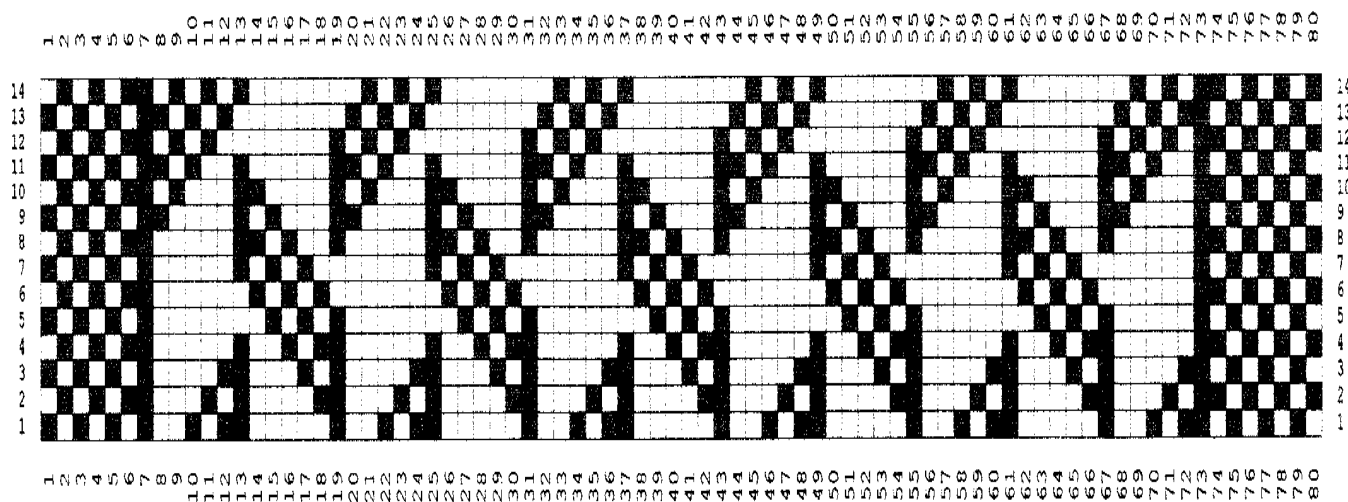
ABBREVIATIONS:

K=Knit

P=Purl

SYMBOLS	
	KNIT ON RS; PURL ON WS
	PURL ON RS; KNIT ON WS

See following pages for detail stitch pattern and chart.



Every effort has been made to have the knitting instructions accurate and complete. We cannot be responsible for variance of individual knitters, human errors, or typographical mistakes.

(© 2012 Newton's Yarn Country. All rights reserved.)



Newton's Yarn Country (714) 634-9116
2100 E. Howell Ave, Suite 211, Anaheim, Ca 92806 USA
www.newtons.com Email: newtonknits@aol.com

NEWTON'S YARN COUNTRY PANDA SCARF

Abbreviation Knitting instruction: K = Knit. P = Purl.

Cast on 80 sts.

Bottom border:

R1: (RS) (P1, K1) 40 times.

R2: (K1, P1) 40 times.

Repeat the last two rows until end of R14.

Begin Lattice Pattern:

R1: (RS) (K1, P1) four times; P1, K1, [P1, K2, P3, (P2, K1) twice] five times; P1, K1, (K1, P1) four times.

R2: (P1, K1) twice; (P1, K1, P1) twice; [K3, P2, K3, (K1, P1) twice] five times; K3, P1, (P1, K1) three times.

R3: (K1, P1) four times; P2, [P1, K2, P2, (P1, K1) twice; P3] five times; P1, K1, (K1, P1) four times.

R4: (P1, K1) three times; P2, K2, [K3, P2, (K1, P1, K1) twice; K1] five times; K3, P1, (P1, K1) three times.

R5: (K1, P1) four times; P2, [P3, (P1, K1) three times; P3] five times; P1, (P1, K1) four times; P1.

R6: (P1, K1) three times; P2, K2, [K3, (K1, P1) three times; K3] five times; K3, P1, (P1, K1) three times.

R7: (K1, P1) four times; P2, [P1, (P1, K1) three times; P5] five times; P1, (P1, K1) four times; P1.

R8: (P1, K1) three times; P2, K2, [K1, (K2, P1) twice; K1, P2, K2] five times; K3, P1, (P1, K1) three times.

R9: (K1, P1) three times; K2, P2, [P1, (P1, K1) twice; P3, K2, P2] five times; P1, (P1, K1) four times; P1.

R10: (P1, K1) three times; P2, K2, [(K1, P1) twice; K4, P2, K2] five times; K1, (P1, K1, P1) twice; K1, P1, K1.

R11: (K1, P1) twice; (K1, P1, K1) twice; (P2, K1, P5, K2, P1, K1) five times; P1, (P1, K1) four times; P1.

R12: (P1, K1) twice; (P1, K1, P1) twice; [(K1, P1) twice; K7, P1] five times; K1, (P1, K1, P1) twice; K1, P1, K1.

R13: (K1, P1) twice; (K1, P1, K1) twice; [P1, K1, P6, (P1, K1) twice] five times; P1, K1, (K1, P1) four times.

R14: (P1, K1) twice; (P1, K1, P1) twice; [K1, P1, K6, (K1, P1) twice] five times; K1, (P1, K1, P1) twice; K1, P1, K1.

Repeat 14 row pattern 22 times or to your desired length

Top border:

R1: (RS) (P1, K1) 40 times.

R2: (K1, P1) 40 times.

Repeat the last two rows until end of R14.

Bind Off.



Newton's Yarn Country (714) 634-9116 www.newtons.com
2100 E. Howell Ave, Suite 211, Anaheim, Ca 92806 USA
Email: newtonknits@aol.com

Newton's Yarn Country

Yarns Twisted and Dyed in America

Stop in and become inspired with the fabulous variety of yarns in our store. You'll find cottons, bamboo, silk, merino, cashmere, and rayon designer novelties – both solid and hand-painted colors.

Twice yearly, in the Spring and in the Fall, Newton's host a fiber seminar in Anaheim, California for both the hand and machine knitter, crocheter and weaver. At our seminars, if it involves yarn, we cover it. You can come and shop and/or become involved in a variety of classes, from simple knitting and crochet instruction to demonstrations on various knitting machines, weaving, and felting. See our website for our calendar of events.

We both love color, fibers, and textures. Together, Norman and Helen are consistently developing new yarns for both the hand and machine knitter crocheter, and custom weavers from our own factory. These are not your typical yarns, but "custom yarns" that we twist, dye, and sell factory direct to you. Many of you have seen our yarns at Stitches, Vogue LIVE Knitting, CGOA & TKG, and weaving conferences.

**2100 E. Howell Ave, Suite 211, Anaheim, CA 92806
www.newtons.com Email: newtonknits@aol.com (714) 634-9116**