

NEWTON'S YARN COUNTRY SUPERWASH MERINO SCARF

YARN: Newton's Yarn Country SUPERWASH MERINO, 800 yards.
GAUGE: Using size 7-9 needle 4-5 sts per inch

ABBREVIATIONS:

K=Knit

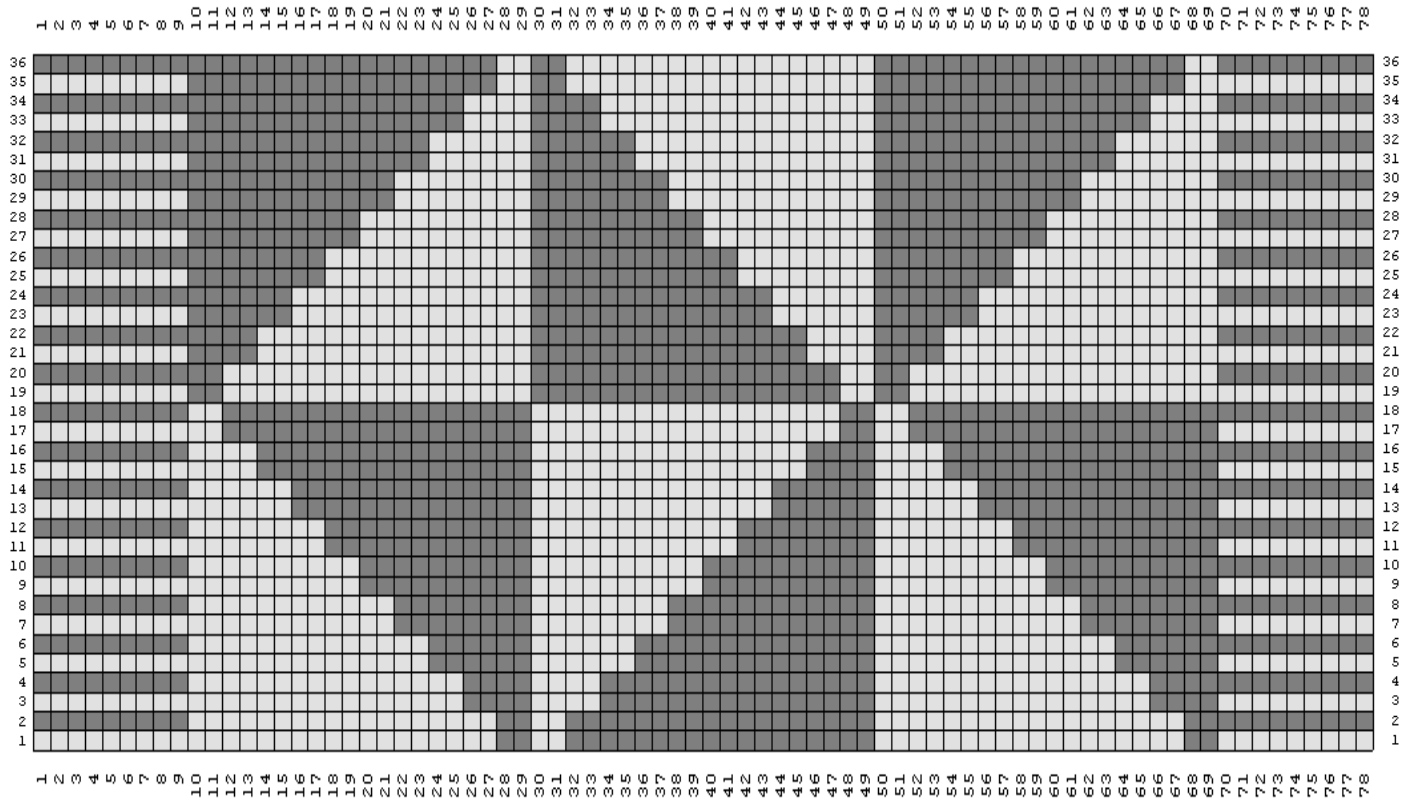
P=Purl

SYMBOLS	
	KNIT ON RS; PURL ON WS
	PURL ON RS; KNIT ON WS



NEWTON'S YARN COUNTRY
 SUPERWASH MERINO SCARF
www.newtons.com

See following pages for detail stitch pattern and chart.



Every effort has been made to have the knitting instructions accurate and complete. We cannot be responsible for variance of individual knitters, human errors, or typographical mistakes.

(© 2012 Newton's Yarn Country. All rights reserved.)



Newton's Yarn Country (714) 634-9116
 2100 E. Howell Ave, Suite 211, Anaheim, Ca 92806 USA
www.newtons.com Email: newtonknits@aol.com

NEWTON'S YARN COUNTRY SUPERWASH MERINO SCARF

Cast on 98 sts.

Bottom Border:

Slip 1 sts (selvage), Knit 77 sts.

Repeat for a total of 20 rows.

Begin Pinwheel Garter Pattern

- Row 1: (RS) Slip 1 st, Knit 9 sts. K16, (K2, P2) twice; P16, K18, P2. End with knit 10 sts.
- Row 2: Slip 1 st, Knit 9 sts. K2, P18, K16, (K2, P2) twice; P16. End with knit 10 sts.
- Row 3: Slip 1 st, Knit 9 sts. K12, (K4, P4) twice; P12, K16, P4. End with knit 10 sts.
- Row 4: Slip 1 st, Knit 9 sts. K4, P16, K12, (K4, P4) twice; P12. End with knit 10 sts.
- Row 5: Slip 1 st, Knit 9 sts. K8, (K6, P6) twice; P8, K14, P6. End with knit 10 sts.
- Row 6: Slip 1 st, Knit 9 sts. K6, P14, K8, (K6, P6) twice; P8. End with knit 10 sts.
- Row 7: Slip 1 st, Knit 9 sts. K4, (K8, P8) twice; P4, K12, P8. End with knit 10 sts.
- Row 8: Slip 1 st, Knit 9 sts. K8, P12, K4, (K8, P8) twice; P4. End with knit 10 sts.
- Row 9 and 10: Slip 1 st, Knit 9 sts. (K10, P10) three times. End with knit 10 sts.
- Row 11: Slip 1 st, Knit 9 sts. K8, P12, K4, (K8, P8) twice; P4. End with knit 10 sts.
- Row 12: Slip 1 st, Knit 9 sts. K4, (K8, P8) twice; P4, K12, P8. End with knit 10 sts.
- Row 13: Slip 1 st, Knit 9 sts. K6, P14, K8, (K6, P6) twice, P8. End with knit 10 sts.
- Row 14: Slip 1 st, Knit 9 sts. K8, (K6, P6) twice; P8, K14, P6. End with knit 10 sts.
- Row 15: Slip 1 st, Knit 9 sts. K4, P16, K12, (K4, P4) twice; P12. End with knit 10 sts.
- Row 16: Slip 1 st, Knit 9 sts. K12, (K4, P4) twice; P12, K16, P4. End with knit 10 sts.
- Row 17: Slip 1 st, Knit 9 sts. K2, P18, K16, (K2, P2) twice; P16. End with knit 10 sts.
- Row 18: Slip 1 st, Knit 9 sts. K16, (K2, P2) twice; P16, K18, P2. End with knit 10 sts.
- Row 19: Slip 1 st, Knit 9 sts. P2, K18, P16, (P2, K2) twice; K16. End with knit 10 sts.
- Row 20: Slip 1 st, Knit 9 sts. P16, (P2, K2) twice; K16, P18, K2. End with knit 10 sts.
- Row 21: Slip 1 st, Knit 9 sts. P4, K16, P12, (P2, K4) twice; K12. End with knit 10 sts.
- Row 22: Slip 1 st, Knit 9 sts. P12, (P4, K4) twice; K12, P16, K4. End with knit 10 sts.
- Row 23: Slip 1 st, Knit 9 sts. P6, K14, P8, (P6, K6) twice; K8. End with knit 10 sts.
- Row 24: Slip 1 st, Knit 9 sts. P8, (P6, K6) twice; K8, P14, K6. End with knit 10 sts.
- Row 25: Slip 1 st, Knit 9 sts. P8, K12, P4, (P8, K8) twice; K4. End with knit 10 sts.
- Row 26: Slip 1 st, Knit 9 sts. P4, (P8, K8) twice; K4, P12, K8. End with knit 10 sts.
- Row 27 and 28: Slip 1 st, Knit 9 sts. (P10, K10) three times. End with knit 10 sts.
- Row 29: Slip 1 st, Knit 9 sts. P4, (P8, K8) twice; K4, P12, K8. End with knit 10 sts.
- Row 30: Slip 1 st, Knit 9 sts. P8, K12, P4, (P8, K8) twice; K4. End with knit 10 sts.
- Row 31: Slip 1 st, Knit 9 sts. P8, (P6, K6) twice; K8, P14, K6. End with knit 10 sts.
- Row 32: Slip 1 st, Knit 9 sts. P6, K14, P8, (P6, K6) twice; K8. End with knit 10 sts.
- Row 33: Slip 1 st, Knit 9 sts. P12, (P4, K4) twice; K12, P16, K4. End with knit 10 sts.
- Row 34: Slip 1 st, Knit 9 sts. P4, K16, P12, (P4, K4) twice; K12. End with knit 10 sts.
- Row 35: Slip 1 st, Knit 9 sts. P16, (P2, K2) twice; K16, P18, K2. End with knit 10 sts.
- Row 36: Slip 1 st, Knit 9 sts. P2, K18, P16, (P2, K2) twice; K16. End with knit 10 sts.

Repeat pattern to the desired length. (Sample is 540 rows)

Bind off.

Bottom Border:

Slip 1 sts (selvage), Knit 77 sts.

Repeat for a total of 20 rows.



Newton's Yarn Country (714) 634-9116 www.newtons.com
2100 E. Howell Ave, Suite 211, Anaheim, Ca 92806 USA
Email: newtonknits@aol.com



Newton's Yarn Country (714) 634-9116
 2100 E. Howell Ave, Suite 211, Anaheim, Ca 92806 USA
 www.newtons.com Email: newtonknits@aol.com



Newton's Yarn Country (714) 634-9116
 2100 E. Howell Ave, Suite 211, Anaheim, Ca 92806 USA
 www.newtons.com Email: newtonknits@aol.com

Newton's Yarn Country	Yarn Weight	Gauge Per Inch	Needle Sizes	CYC Yarn Standard	MK Tensions	DPI
ANGORA BLEND 45% ANGORA 45% MERINO 10% RAYON	2300 Yards/LB	6-8 STS	US 1 to 3 2.5-3.25mm	FINGERING	4.5 T10 6.5 T6 9.0 T2	RECOMMEND FOR WEFT ONLY
BAMBA 75% COTTON 25% RAYON	1100 Yards/LB	4-5 STS	US 7 to 9 4.5-5.5mm	WORSTED	4.5 T10.2 6.5 T5 9.0 T1	7.5 DPI
BAMBOO COTTON 50% BAMBOO 50% COTTON	1600 Yards/LB	6-7 STS	US 1 to 3 2.5-3.25mm	FINGERING	4.5 T10 6.5 T6 9.0 T2	12-13 DPI
BIG CHENILLE 100% RAYON HANDPAINTED	400 Yards/LB	2-3 STS	US 17 to 19 12-15mm	CHUNKY	T10 EON	5 DPI
CANNON 40% COTTON/40% RAYON 20% LINEN	1000 Yards/LB	4-5 STS	US 7 to 9 4.5-5.5mm	WORSTED	4.5 T10.2 6.5 T5 9.0 T1	7.5 DPI
CASHMERE MERINO 50% CASHMERE 50% MERINO	2000 Yards/LB	6-7 STS	US 1 to 3 2.5-3.25mm	FINGERING	4.5 T10 6.5 T6 9.0 T2	10 DPI
CASHMERE SILK 50% CASHMERE 50% MERINO	1100 Yards/LB	4-5 STS	US 7 to 9 4.5-5.5mm	WORSTED	4.5 T10.2 6.5 T5 9.0 T1	7.5 DPI
CHAMOIS 80% RAYON 20% LINEN	1400 Yards/LB	5-6 STS	US 4 to 6 3.5-5mm	SPORT	4.5 T9 6.5 T5 9.0 T1	7.5 DPI
CHINO COTTON BOUCLE 100% COTTON	900 Yards/LB	4-5 STS	US 7 to 9 4.5-5.5mm	HEAVY WORSTED	9.0 T10	5 DPI
COTTON ICE 50% COTTON 50% RAYON	2300 Yards/LB	6-8 STS	US 1 to 3 2.5-3.25mm	FINGERING	4.5 T10 6.5 T6 9.0 T2	7.5 DPI
COTTON RAYON BOUCLE 50% COTTON 50% RAYON	1800 Yards/LB	4-5 STS	US 7 to 9 4.5-5.5mm	WORSTED	6.5 T7 9.0 T4	7-8 DPI
DAZZLE 2 50% RAYON 30% WOOL 10% METALLIC	1100 Yards/LB	4-5 STS	US 7 to 9 4.5-5.5mm	WORSTED	6.5 T7 9.0 T4	7-8 DPI
ITALIAN FANCY COTTON RAYON NUB	1000 Yards/LB	4-5 STS	US 7 to 9 4.5-5.5mm	WORSTED	9.0 T10	5 DPI
ITALIAN FORTUNNI 100% RAYON	2000 Yards/LB	6-8 STS	US 1 to 3 2.5-3.25mm	FINGERING	4.5 T10 6.5 T6	10 DPI
ITALIAN FORTUNNI 100% RAYON	1200 Yards/LB	4-5 STS	US 7 to 9 4.5-5.5mm	WORSTED	6.5 T10 9.0 T6	7.5 DPI
LINEN TWEED 60% LINEN 40% RAYON	1250 Yards/LB	5-6 STS	US 7 to 9 4.5-5.5mm	WORSTED	4.5 T9 6.5 T5 9.0 T1	10 DPI
MATTE 100% RAYON	1000 Yards/LB	4-5 STS	US 7 to 9 4.5-5.5mm	FINGERING	4.5 T10.2 6.5 T5 9.0 T1	5 DPI
NEVADA 100% RAYON	1100 Yards/LB	4-5 STS	US 7 to 9 4.5-5.5mm	WORSTED	6.5 T10 9.0 T6	7-8 DPI
MOHAIR 100% WOOL	500 Yards/LB	2-3 STS	US 11 to 13	CHUNKY	6.5 T10.2 9.0 T5	RECOMMEND FOR WEFT ONLY
PUFF N STUFF WOOL/RAYON ACRYLIC	800 Yards/LB	3-4 STS	US 9 to 10 5.5-6.5mm	HEAVY WORSTED	6.5 T6 9.0 T3	5 DPI
SILK WOOL 90% SILK 10% WOOL	3000 Yards/LB	8-10 STS	US 1 to 3 2.5-3.25mm	FINGERING	4.5 T8 6.5 T3	12.5 DPI
SUPERWASH MERINO 70% MERINO WOOL 30% NYLON	1680 Yards/LB	6-7 STS	US 1 to 3 2.5-3.25mm	FINGERING	4.5 T10.2 6.5 T5 9.0 T1	7-8 DPI
	800 Yards/LB	3-4 STS	US 9 to 10 5.5-8mm	CHUNKY	9.0 T10	5 DPI
SOFTBALL COTTON DK 100% COTTON	1680 Yards/LB	5-6 STS	US 4 to 6 3.5-4mm	SPORT	4.5 T10.2 6.5 T5 9.0 T1	7-8 DPI
SOFTBALL COTTON BULKY 100% COTTON	800 Yards/LB	4-5 STS	US 7 to 9 4.5-5.5mm	HEAVY WORSTED	9.0 T10	5 DPI
WOOL BOUCLE 95% WOOL 5% NYLON	800 Yards/LB	4-5 STS	US 7 to 9 4.5-5.5mm	WORSTED	6.5 T10.2 9.0 T5	7-8 DPI

NEWTON'S YARN COUNTRY YARN CALCULATIONS									
OZS	LBS	400 YARDS	500 YARDS	800 YARDS	900 YARDS	1000 YARDS	1100 YARDS	1200 YARDS	1250 YARDS
4	0.25	100	125	200	225	250	275	300	312.5
5.28	0.33	132	165	264	297	330	363	395	412.5
8	0.5	200	250	400	450	500	550	600	625
10.56	0.66	264	330	528	594	660	726	792	825
12	0.75	300	375	600	675	750	825	900	937.5
16	1.0	400	500	800	900	1,000	1,100	1,200	1,250
20	1.25	500	625	1,000	1,125	1,250	1,375	1,500	1,562.5
21.28	1.33	532	665	1,064	1,197	1,330	1,463	1,596	1,662.5
24	1.5	600	750	1,200	1,350	1,500	1,650	1,800	1,875
26.56	1.66	664	830	1,328	1,494	1,660	1,826	1,992	2,075
28	1.75	700	875	1,400	1,575	1,750	1,925	2,100	2,187.5
32	2	800	1,000	1,600	1,800	2,000	2,200	2,400	2,500

NEWTON'S YARN COUNTRY YARN CALCULATIONS									
OZS	LBS	1400 YARDS	1600 YARDS	1680 YARDS	1800 YARDS	2000 YARDS	2300 YARDS	2400 YARDS	3000 YARDS
4	0.25	350	400	420	450	500	575	600	750
5.28	0.33	462	528	544.4	594	660	759	792	990
8	0.5	700	800	840	900	1,000	1,150	1,200	1,500
10.56	0.66	924	1,056	1,108.8	1,188	1,320	1,518	1,584	1,980
12	0.75	1,050	1,200	1,260	1,325	1,500	1,725	1,800	2,250
16	1.0	1,400	1,600	1,680	1,800	2,000	2,300	2,400	3,000
20	1.25	1,750	2,000	2,100	2,250	2,500	2,875	3,000	3,750
21.28	1.33	1,862	2,128	2,234.4	2,394	2,660	3,059	3,192	3,990
24	1.5	2,100	2,400	2,525	2,700	3,000	3,450	3,600	4,500
26.56	1.66	2,324	2,656	2,788.8	2,988	3,320	3,818	3,984	4,980
28	1.75	2,450	2,800	2,945	3,150	3,500	4,025	4,200	5,250
32	2	2,800	3,200	3,360	3,600	4,000	4,600	4,800	6,000

ESTIMATED PROJECT YARN YARDAGE								
YARN	FINGERING WT		SPORT WT		WORSTED		CHUNKY	
SIZE	CHILD	ADULT	CHILD	ADULT	CHILD	ADULT	CHILD	ADULT
SCARF	400	660	350	700	190	380	125	250
VEST	400 to 750	950 to 1650	300 to 600	700 to 1250	250 to 500	600 to 1050	175 to 400	450 to 800
SWEATER	750 to 1450	1800 to 3000	550 to 1100	1400 to 2300	500 to 1000	1200 to 2000	350 to 700	900 to 1500

Gram	Ounces
50	1.75
100	3.5

NEWTON'S SPRING FLING SEMINAR
APRIL 27-29, 2012
 FOR MORE INFORMATION, CLASS SCHEDULE, INSTRUCTOR BIOGRAPHYS, ETC
 GO TO OUR WEBSITE www.newtons.com, OR phone (714) 634-9116

Newton's Yarn Country

Yarns Twisted and Dyed in America

Stop in and become inspired with the fabulous variety of yarns in our store. You'll find cottons, bamboo, silk, merino, cashmere, and rayon designer novelties – both solid and hand-painted colors.

Twice yearly, in the Spring and in the Fall, Newton's host a fiber seminar in Anaheim, California for both the hand and machine knitter, crocheter and weaver. At our seminars, if it involves yarn, we cover it. You can come and shop and/or become involved in a variety of classes, from simple knitting and crochet instruction to demonstrations on various knitting machines, weaving, and felting. See our website for our calendar of events.

We both love color, fibers, and textures. Together, Norman and Helen are consistently developing new yarns for both the hand and machine knitter crocheter, and custom weavers from our own factory. These are not your typical yarns, but "custom yarns" that we twist, dye, and sell factory direct to you. Many of you have seen our yarns at Stitches, Vogue LIVE Knitting, CGOA & TKGGA, and weaving conferences.

**2100 E. Howell Ave, Suite 211, Anaheim, CA 92806
www.newtons.com Email: newtonknits@aol.com (714) 634-9116**